

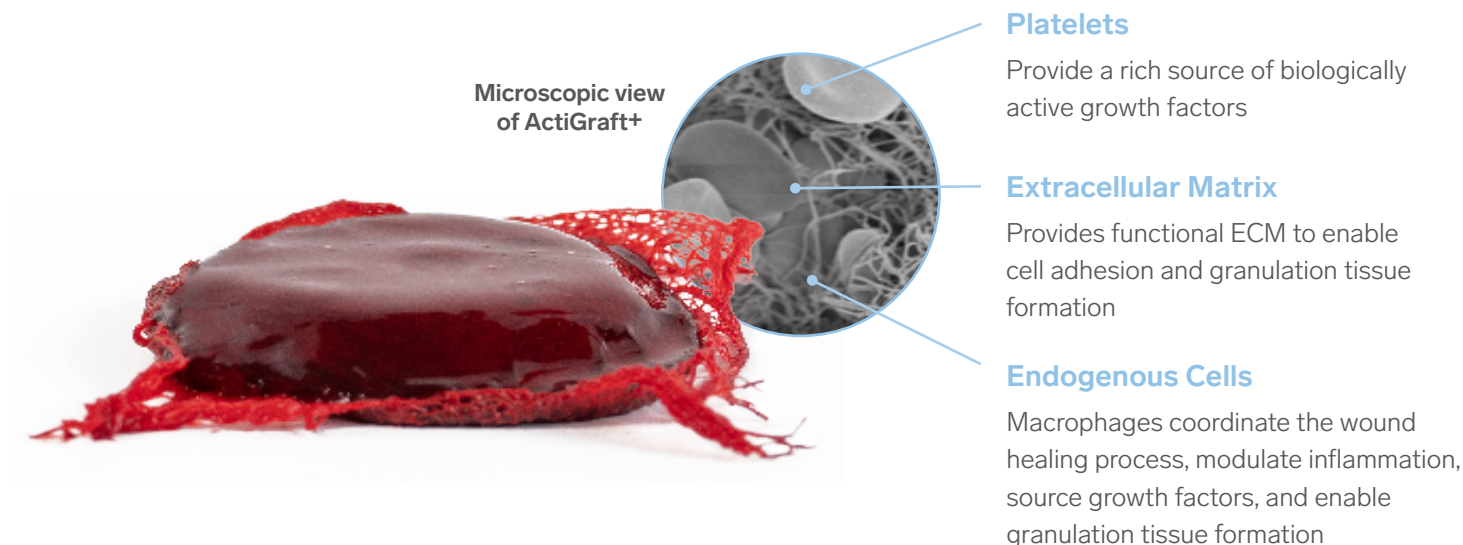
ActiGraft+

Autologous Wound Care System



A personalized approach to wound healing

ActiGraft+ system is an autologous, point-of-care wound management solution created from your patient's whole blood. Once applied, the blood clot serves as a protective covering and optimizes the body's own healing potential.



RELIABLE OUTCOMES

173% more patients healed in the intervention arm compared to standard of care using Intent to treat (ITT) population, giving **odds ratio of 2.73.¹**

EASILY ADAPTABLE

Single application of the 28 sq. cm. whole blood clot can be applied up to **56 sq. cm.** wound.

STREAMLINED PROCEDURE

Seamless process with **no centrifuge, 5-minute coagulation**, and the flexibility to draw and store blood up to 24 hours prior to the procedure.

ASSURED CONFIDENCE

Described by NCD 270.3 as a blood derived product, ActiGraft+ is **eligible for reimbursement under G0465.**

NATURAL HEALING

Created from a patient's own blood, **even in the presence of blood thinners**, to provide the wound with an optimal, natural healing environment.

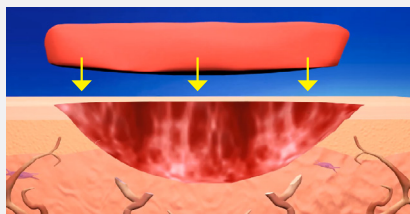
AUTOLOGOUS

A personalized solution for patients with religious constraints, **immediately available at point of care.**

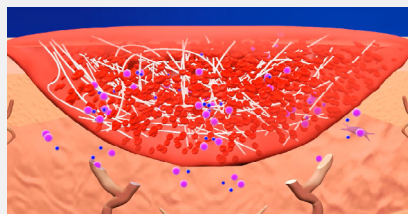
Designed to jump-start wound healing

Designed to meet the needs of today's high-volume practices and centers, ActiGraft+ offers practitioners a wound healing solution that delivers a quick, easy, and clean procedure.

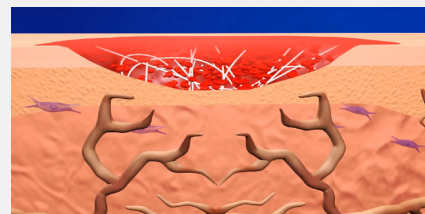
How ActiGraft+ Works



Applied directly to the wound surface, ActiGraft+ is created at your patient's bedside in 5 minutes by mixing fresh whole blood with proprietary coagulation powder.



ActiGraft+ contains platelets, red blood cells and optimal concentration required in the wound healing process.



Once applied, ActiGraft+ reignites the healing cascade, serving as a protective covering that supports wound healing processes which naturally occur in the body.

Eligible for reimbursement with Medicare and Medicare Advantage Plans.

ActiGraft+ is described by the National Coverage Determination (NCD 270.3) as a blood-derived product for non-healing wounds and is eligible for reimbursement nationally from Medicare and Medicare Advantage with HCPCS G0465.

HCPCS Code	HCPCS Description	MPFS Status Code	Medicare National Payment (Facility)/(Office)
G0465	Autologous platelet rich plasma (PRP) or other blood-derived product for diabetic chronic wounds/ulcers, using an FDA-cleared device for this indication, (Includes as applicable administration, dressings, phlebotomy, centrifugation or mixing, and all other preparatory procedures, per treatment)	A	FACILITY \$87.33 OFFICE \$890.18

CMS will cover autologous PRP for the treatment of chronic non-healing diabetic wounds for a duration of 20 weeks, when prepared by devices whose Food and Drug Administration (FDA)-cleared indications include the management of exuding cutaneous wounds, such as diabetic ulcers.

Ready to use right out of the box

The ActiGraft+ system provides single-use components needed for the safe and rapid preparation of Whole Blood Clot (WBC) from a small sample of a patient's own peripheral blood.



ActiGraft+ system components

Each ActiGraft+ system is comprised of an individual box that contains all the components needed to prepare an ActiGraft+ whole blood clot.



ActiGraft+ is described by NCD 270.3 as a blood-derived product for chronic, non-healing wounds and is eligible for reimbursement under the G0465 code.

PRODUCT NUMBER	DESCRIPTION	BOX QTY	STORAGE	CLOT SIZE
RD2201	ActiGraft+ system	5	41°F - 86°F	28 sq. cm.



Visit reddressmedical.com to request a sample and discover how ActiGraft+ can benefit your facility and patients.

USA

822 A1A North, Ste 310, Ponte Vedra Beach, FL 32082
customerservice@reddressmedical.com
Tel: +1.800.674.9615 Fax: +1.800.561.8127

RedDress

For safety information, visit www.reddressmedical.com/safety-info

*RedDress. (n.d.). Safety and efficacy of actigraft treatment in wound care in medical centers - full text view. Safety and Efficacy of ActiGraft Treatment in Wound Care in Medical Centers. <https://clinicaltrials.gov/ct2/show/NCT04699305?term=reddress&draw=2&rank=5>